

TTB/TSS

FLOWLINE^{TW}

Turbidity and suspended solids analyzer

Application

TTB/TSS turbidity and suspended solids measuring sensor, electrode adopt scatter light (880nm LED), and with UPVC anti- rust material which can last longer. Background lighting compensate; signal average of 1500 reading of isolated output preventing larger particle interfere to form a stable environment. Major application: Monitor the turbidity and suspended solids of wastewater exhaust, recycle water process, river, lake, fish- farming...etc.



Feature

- n Blue LCD back-light display, 90°C durable, suitable for outdoor use.
- n Slope and zero span error display when calibration. After calibration electrode slope will be auto display.
- n Background lighting compensation, signal average of 1500 reading of isolated output prevent larger particle interfere to form a stable environment.
- n Electrode scatter light (880nm LED) with UPVC anti-rust material which can last longer.
- n Controller can auto detect electrode damage and error display.
- n Waterproof IP65 certificated.
- n HI/LO lag time can be adjust, and display (TB, °C) or (SS, °C) at the same time.

Specification

Model	TTB - 500C	TSS - 500C
Test Range	0~100.0, 1000NTU	0~200.0, 2000ppm
Accuracy	±3% full scale	±3% full scale
Resolution	0.1, 1 NTU	0.1, 1ppm
Temperature Display	Manual fixed resistance 5K for 25	
	ATC Probe NTC-5K for 25 (option)	
LCD Display	6 1/2, LCD Display with function indicator BLue back light	
Working Temp.	0 to 65	
Analog Output	DC 4-20mA Isolated Max. load 600	

Communication Mode	RS-485 Modbus for (TB and), (SS and)
Control Mode	Hi/Lo (Two relays)
Setting point	H1/H2, L1/L2 (4 points)
Contact Current	110VAC, Max. 5A/240VAC Max. 3A
Power	110/240VAC, 50/60 Hz \pm 15%
Cutting Size	92*92*125mm H*W*D (Panel mounting)
IP Level	IP65

TTB/TSS electrode TS105S-WIPER



TTB/TSS Electrode TS105S- WIPER

Model	TS-105S-WIPER	SS-105S-WIPER
Range	0~100.0, 1000 NTU	0~200.0, 2000ppm
Resolution	\pm 3% full scale	\pm 3% full scale
Reflection angle	90 Degree	
Respond time	Approx. 5 secs for reading 1500 frequency to average	

Auto Clean	Auto clean wiper
Work Temp.	0 ~ 65
Material	UPVC or SS-316L
Power	DC +12V
Lighting	LED 880nm
IP Level	IP-68

PH Fitting Accessories

PP-pipe (PP-100,PP-200,PP-300)

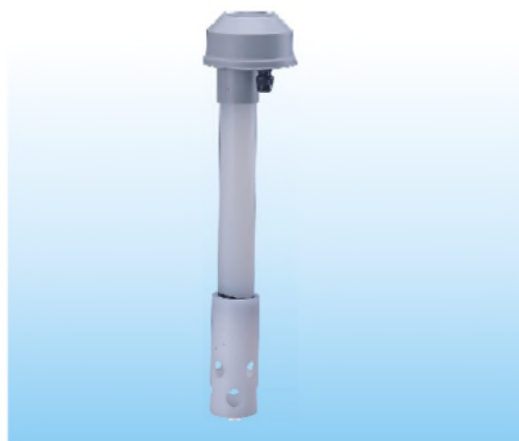
C:電極保護套管 (PP-100,200,300)

材質:PP (1" pipe)

長度:1,2,3M(PP-100,PP-200,PP-300)

耐腐蝕防水(Parking)增加使用壽命

防水等級(IP-68)



PP-Holder (LH-100)

D: PP管固定架 (LH-100)

材質:抗紫外線(ABS)

支撐力:12Kg



Junction box (BOX-100)

A:防水型接線盒(BOX-100)

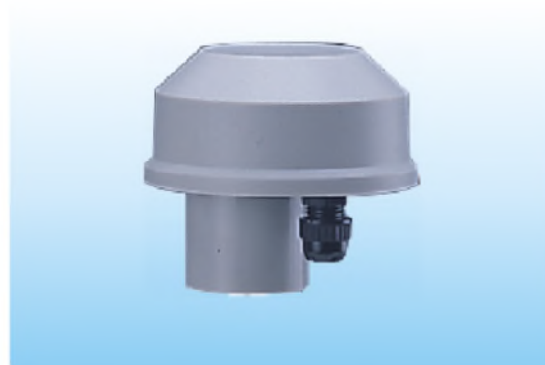
材質:抗紫外線(ABS)

圓形屋頂設計,防水效果佳

無螺絲固定,施工方便

耐腐蝕防水(Parking),增加使用壽命

防水等級(IP-67)



Order Information

Controller Model number: TTB - 500C / TSS - 500C

Electrode Model number: TS-105S-WIPER / SS-105S-WIPER

Fitting Accessories

Water Resistant Box: T-BOX-100

Electrode Tube Cover : T-PP -100、 T-PP 200、 T-PP 300

Tube Cover Bracket: T- LH-100

Standard Calibration Liquid : Calibration conductivity standard liquid

(84,1408,12880 us/cm)